

FALMOUTH HOUSE

at • Ocean View



We understand that as people age, their needs change. That is why we offer a vibrant community for seniors who value their independence knowing that assistance is always close at hand. Each individual is actively involved in their own personalized care plan, delivered by certified staff and supervised by licensed professional nurses 24 hours a day.

Private apartments are situated among beautifully appointed sitting areas, libraries, dining rooms, and activity rooms with access to lovely gardens. In these pleasant settings, our Life Enrichment Program offers a wide variety of stimulating options. Designed to increase each resident's intellectual, physical, spiritual, and social well-being, it includes musical performances, lectures, art classes, local trips, shopping, games, exercise, and discussion groups.



Our goal is to help our residents live life to the fullest, with daily assistance at their fingertips.

Three delicious, chef-prepared meals are provided each day, along with medication management and discreet personal assistance with activities of daily living, as needed. At Falmouth House, our staff is dedicated to enhancing each resident's well-being with respect, encouragement, and stimulation.

FALMOUTH HOUSE

at • Ocean View

Sample Menu

Breakfast

Choice of juices, coffee, cocoa or tea; hot and cold cereals, fresh fruits, yogurt, eggs and omelets, bacon, sausage, toast, English muffin, Danish, and muffins.

Lunch

Beef Stroganoff

Tender braised beef with mushrooms, onions, and brandy over egg noodles. Served with sautéed summer squash.

Half Turkey Sandwich

Simple turkey sandwich with lettuce, tomato, and mayonnaise. Served with Sun Chips.

Fresh Fruit Plate

Diced cantaloupe, pineapple, watermelon, mandarin oranges, and grapes. Served with yogurt or cottage cheese.

Desserts

Cake, cookies, pudding and Jell-O.

Dinner

Soup

Martha's chicken and mushroom Marsala.

Baked Ham

Topped with sweet and tangy raisin sauce (optional).

Macaroni and Cheese

Classic casserole, rich and creamy.

Roast Rib Eye of Beef

Sliced thin with au jus sauce (optional).

Sides

Yukon Gold smashed potatoes, asparagus, or cauliflower.

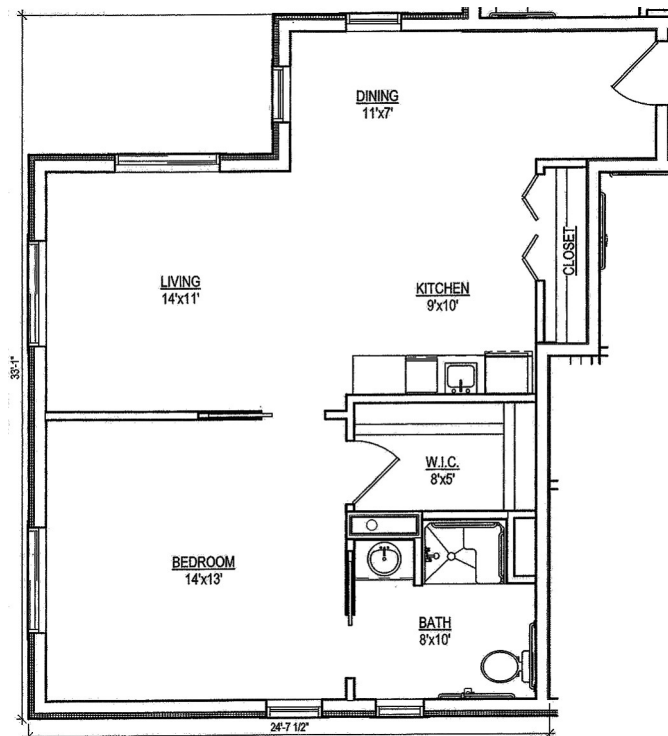
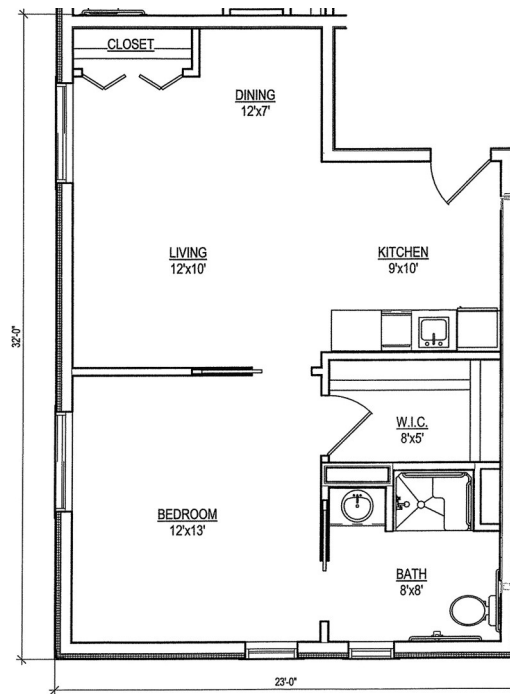
Desserts

Apple turnover, ice creams, and frozen yogurts.

FALMOUTH HOUSE

at • OceanView

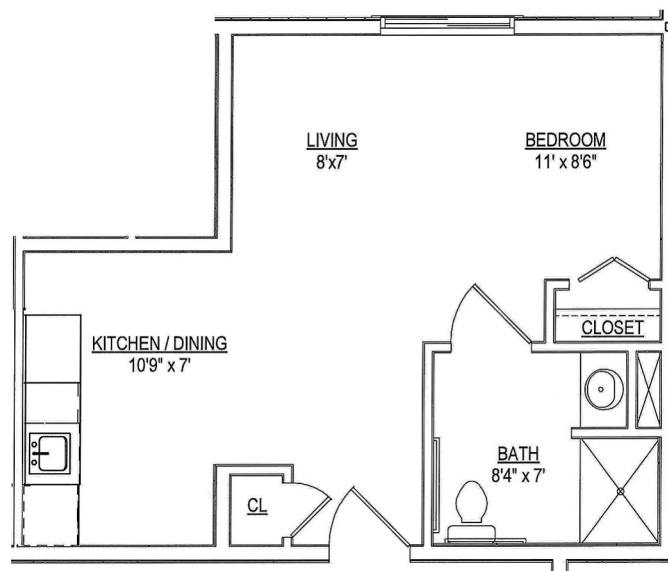
Deluxe 1 Bedrooms



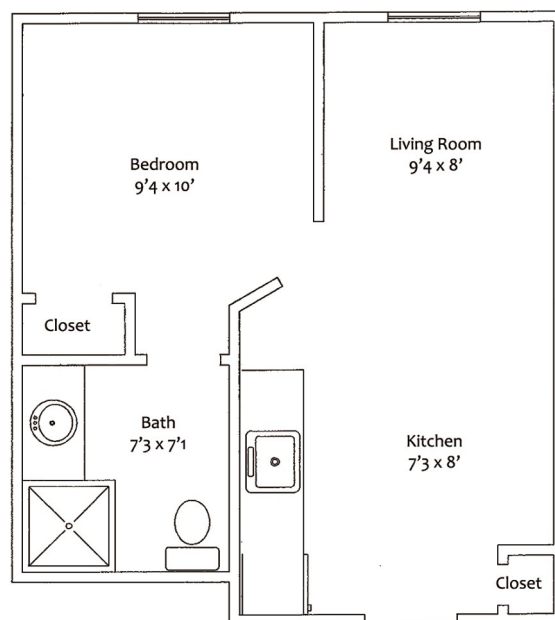
FALMOUTH HOUSE

at • Ocean View

Studio



1 Bedroom



FALMOUTH HOUSE

at • Ocean View

Monthly Rates

Standard One Bedroom Apartment

Level I Services: (\$9,059/month)

- 24-hour licensed nursing staff on site
- Three chef-prepared meals per day
- Weekly linen, laundry, and housekeeping services
- All utilities, except cable and telephone
- Health Care Advocate provided, should hospitalization ever be needed
- Nurse case management in identifying needs, developing care plan, and arranging service delivery
- Communication with primary care physician
- Access to board certified geriatrician
- On site physical, occupational, and speech therapy
- Life Enrichment Program with intergenerational, wellness, social programs, and outings
- Use of all common area recreational facilities on the campus

Level II Services: (\$10,218/month)

In addition to Level I services, includes:

- Medication management which includes administration, monitoring, ordering, and physician follow up
- Scheduled local medical transportation

Level III Services: (\$10,703/month)

In addition to Level I & II services, includes:

- Minimal* bathing assistance
- Minimal* dressing/grooming assistance
- Minimal* assistance with transfers
- Dementia management, limited to cueing

**Minimal assistance - individual is capable of performing at least 75% of the work of the task, one caregiver will support with up to 25%.*

Level IV Services: (\$11,861/month)

In addition to Level I & II services, includes:

- Moderate* bathing assistance
- Moderate* dressing/grooming assistance
- Moderate* assistance with transfers
- Dementia management, limited to cueing, occasional redirection
- Internal escort service, limited to ambulation supervision
- Incontinence assistance limited to getting on/off toilet and/or changing protective garments

**Moderate assistance - individual is capable of performing at least 50% of the work of the task, one caregiver will support with up to 50%.*

Second person rates starting at \$2,433/month. Please inquire about monthly costs for larger apartments.

Effective January 1st, 2025