

# Legacy Memory Care

---

## at • OceanView

---



**L**egacy Memory Care at OceanView provides a uniquely-designed secure community for individuals with memory loss and dementia. Committed to excellence, our team of compassionate caregivers is fully trained to provide assistance that enriches the quality of life of our residents. With active reassurance, personal engagement, comfortable surroundings, and thoughtful care management, residents in all stages of cognitive impairment, and their families, experience security and peace of mind.

At Legacy, we take the time to learn about each individual's life story, along with their interests, abilities, and regular routines. Social engagement and interactive programs are key strategies used to slow cognitive decline. We focus on wellness of mind, body, and spirit using therapeutic recreation, educational activities and exercise. Family involvement and connections to even the most distant loved ones can be maintained through the use of technology.





*Our person-centered focus at Legacy Memory Care ensures that every resident enjoys meaningful life experiences and the feeling of success every day.*

The Legacy environment is designed to provide implicit cues to guide our residents to areas of activity and engagement through the use of architecture and color. Our comfortable setting feels like home, with delicious and nutritious comfort food served family style in a warm relaxed atmosphere.

Centrally located large windows offer a view of the private Legacy Garden, welcoming the outdoors inside, with comfortable seating in a lovely, porch-like setting. Residents and their families can take a stroll through this outdoor haven of meandering paths and benches in the shade.

The Stewart Neighborhood, a beautiful addition to our Legacy Memory Care community, offers five spacious apartments in a lovely new adjoined space where residents can enjoy several new sitting rooms, and proximity to our private salon.

OceanView  
AT • FALMOUTH  
*A 21st century retirement community*™

4 Schoolhouse Drive, Falmouth, Maine 04105 • (207) 781-4621 • [oceanviewrc.com](http://oceanviewrc.com)

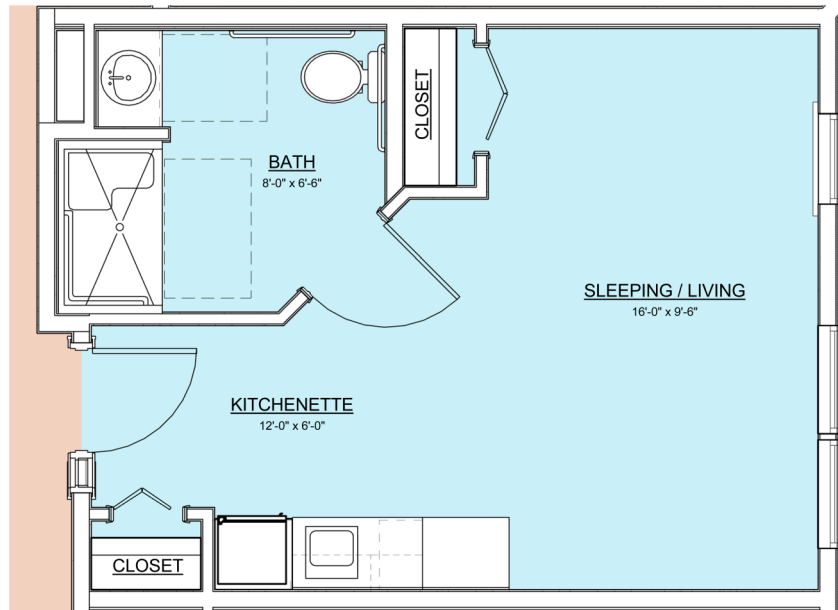
# Legacy Memory Care

---

## at • OceanView

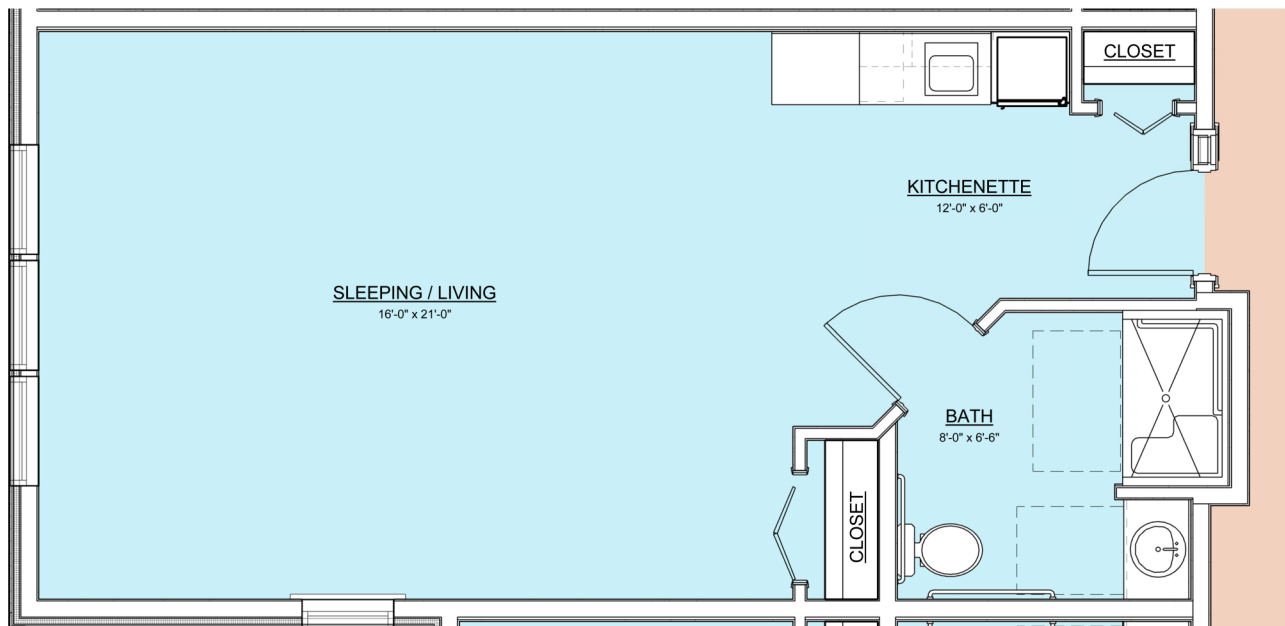
---

### Apartment Style I



369.5 sq. ft.

### Apartment Style II



571.5 sq. ft.

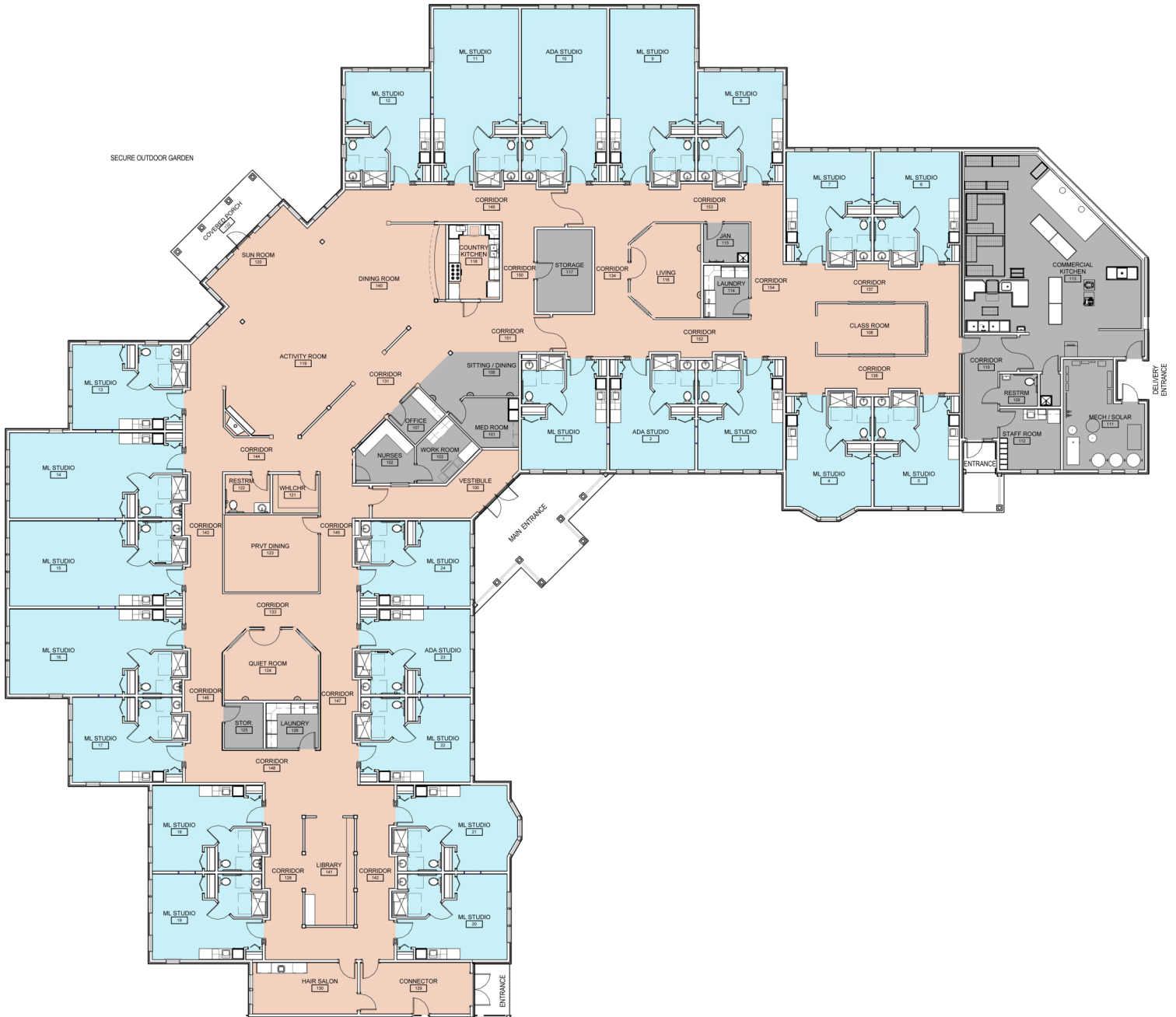
# Legacy Memory Care

---

## at • OceanView

---

### Building Plan



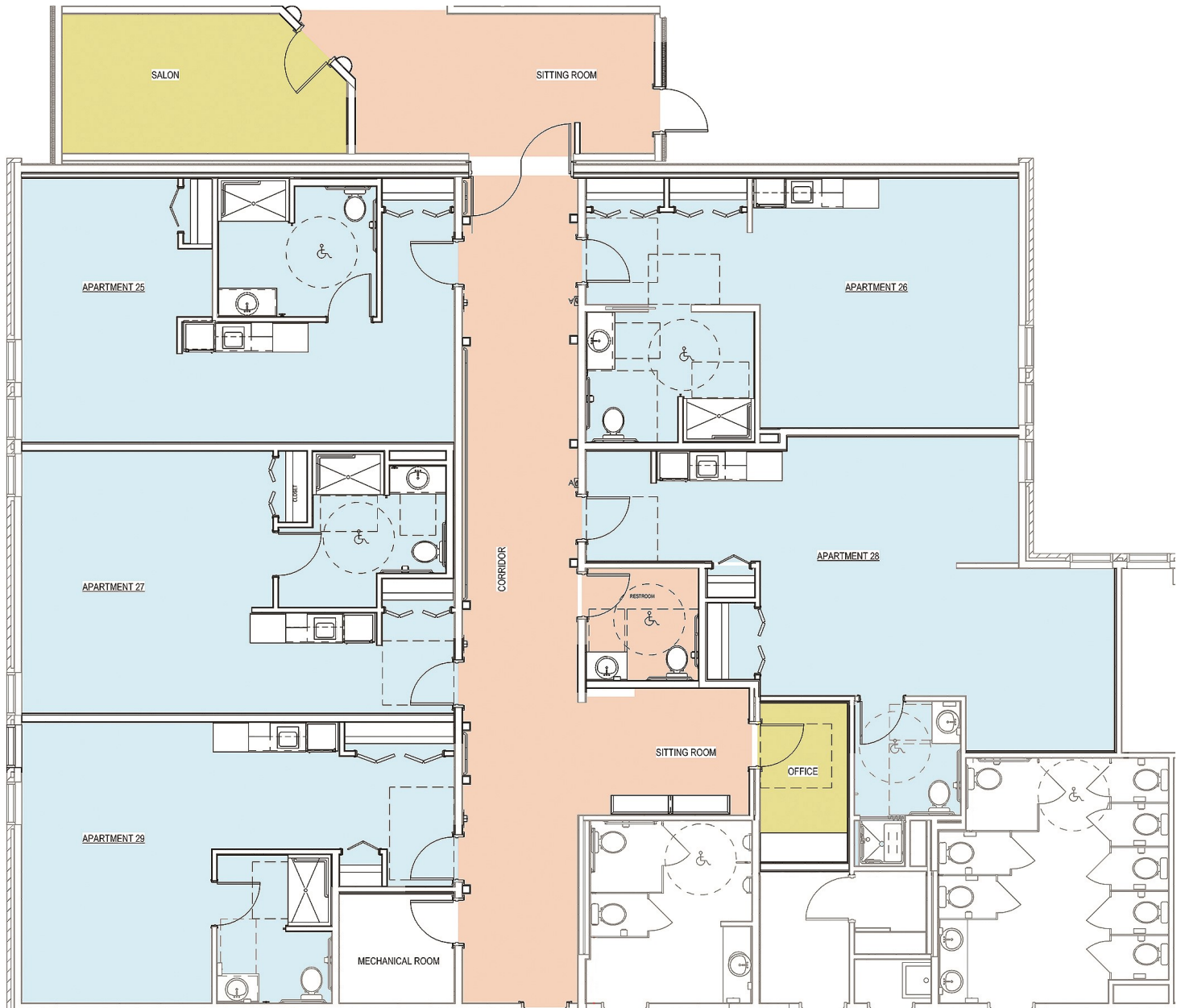
# Legacy Memory Care

---

## at • OceanView

---

### *The Stewart Neighborhood*





# Legacy Memory Care

at • Ocean View

## Services, Amenities & Rates

### Gracious Living

- Private studio apartments with kitchenettes
  - Cable TV hook-up available
  - Housekeeping, laundry and maintenance
- Three nutritious chef-prepared meals per day served family style from a home-like Country Kitchen
- Social, educational and recreational Life Enrichment Program with intergenerational programs and outings
- Private and secure Legacy Garden with walking paths and garden beds
- Hair Salon, open concept library, and activities classroom

### Personal Health Care

- On-site Program Manager and Resident Care Coordinator
- Professionally trained staff on-site with nurse available 24 hours a day
- Specialized program which promotes positive emotions, maximize strengths, and minimize limitations
- Nurse case management available for consultation, assessment and triage
- Medication administration and management
- Communication with primary care provider and access to board certified geriatrician
- Therapeutic fitness programs and Physical, Occupational, and Speech Therapy available on-site
- Transportation to medical appointments with staff assistance available
- Personal care assistance with activities of daily living (ADL's) provided in two levels of service include:
  - Internal escort ambulation assistance
  - Assistance with bathing, dressing, grooming, and feeding in common areas
  - Physical assistance to transfer in or out of bed or a chair or wheelchair
  - Incontinence management for on/off toilet and/or assistance with changing protective garments
  - Dementia management for cueing to scheduled services and activities \*

### Level 1 Services

*Care provided by one staff person aiding per assistance with the above activities of daily living*

### Level 2 Services

*Care provided for activities of daily living including two-person assistance at levels of service customarily provided by Provider to other residents. Needed equipment purchase/rent is responsibility of resident.*

### Daily Rates

- |                                 |                    |
|---------------------------------|--------------------|
| • Studio (369.5 sq. ft.)        | <b>\$434</b>       |
| • Large Studio (386.8 sq. ft.)  | <b>\$444</b>       |
| • The Stewart Neighborhood      | <b>\$460-\$486</b> |
| • Deluxe Studio (571.5 sq. ft.) | <b>\$486</b>       |

*\*You must have behaviors that do not interfere with other residents' quality of life and/or staff operations. Behaviors affecting the ability of 2 staff persons to assist with ADL's will require supplemental care or alternative placement. See lease for further details on care levels and limitations.*

Effective January 1st, 2026